



## Black Tie Group, LLC

<http://www.blacktiecbd.net>

[support@blacktiecbd.net](mailto:support@blacktiecbd.net)

(888) 702-2285

Sample 214-021324-446

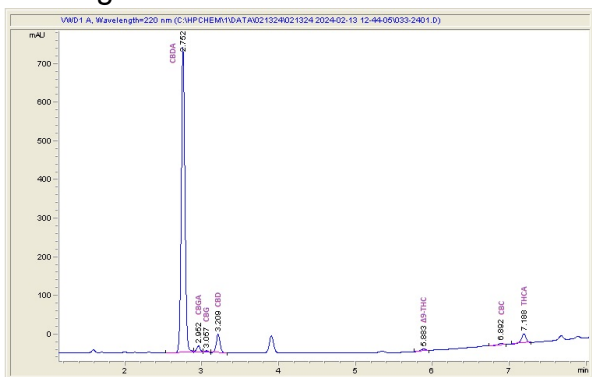
Harlequin (Indoor) CBD Flower

Sample Submitted: 02-13-2024; Report Date: 02-20-2024

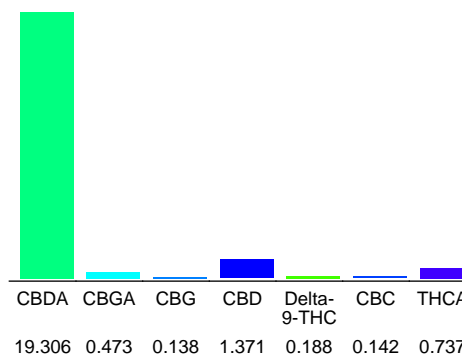
## Harlequin (Indoor) CBD Flower

Plant Material: Hemp Flower

### Chromatogram



### Cannabinoid Profile



### Cannabinoid Profile by HPLC

0.19%

Delta-9-THC

1.37%

CBD

22.35%

Total Cannabinoids

Cannabinoid	% wt	mg/g
CBDA	19.31	193.06
CBGA	0.473	4.73
CBG	0.138	1.38
CBD	1.371	13.71
Delta-9-THC	0.188	1.88
CBC	0.142	1.42
THCA	0.737	7.37
<b>Total Cannabinoids</b>	<b>22.35</b>	<b>223.5</b>
<b>Calculated Total THC</b>	<b>0.83</b>	<b>8.34</b>
<b>Calculated CBD Yield</b>	<b>18.30</b>	<b>183.02</b>

Calculated Total THC = Delta-9-THC + 0.877 \* THCA

Calculated Maximum CBD Yield = CBD + 0.877 \* CBDA

### Marin Analytics, LLC

250 Bel Marin Keys Blvd, Suite D4  
Novato, CA 94949

833-321-TEST / [info@marinanalytics.com](mailto:info@marinanalytics.com)

Mike Clemmons  
Lab Manager

This sample has been tested by Marin Analytics, LLC using valid testing methodologies and a quality system. Values reported relate only to the sample tested. Marin Analytics, LLC makes no claims as to the efficacy, safety, or other risks associated with any detected or non-detected levels of any compounds reported herein. This Certificate shall not be reproduced except in full without the written approval of Marin Analytics, LLC. Copyright 2023 Marin Analytics, LLC All Rights Reserved.